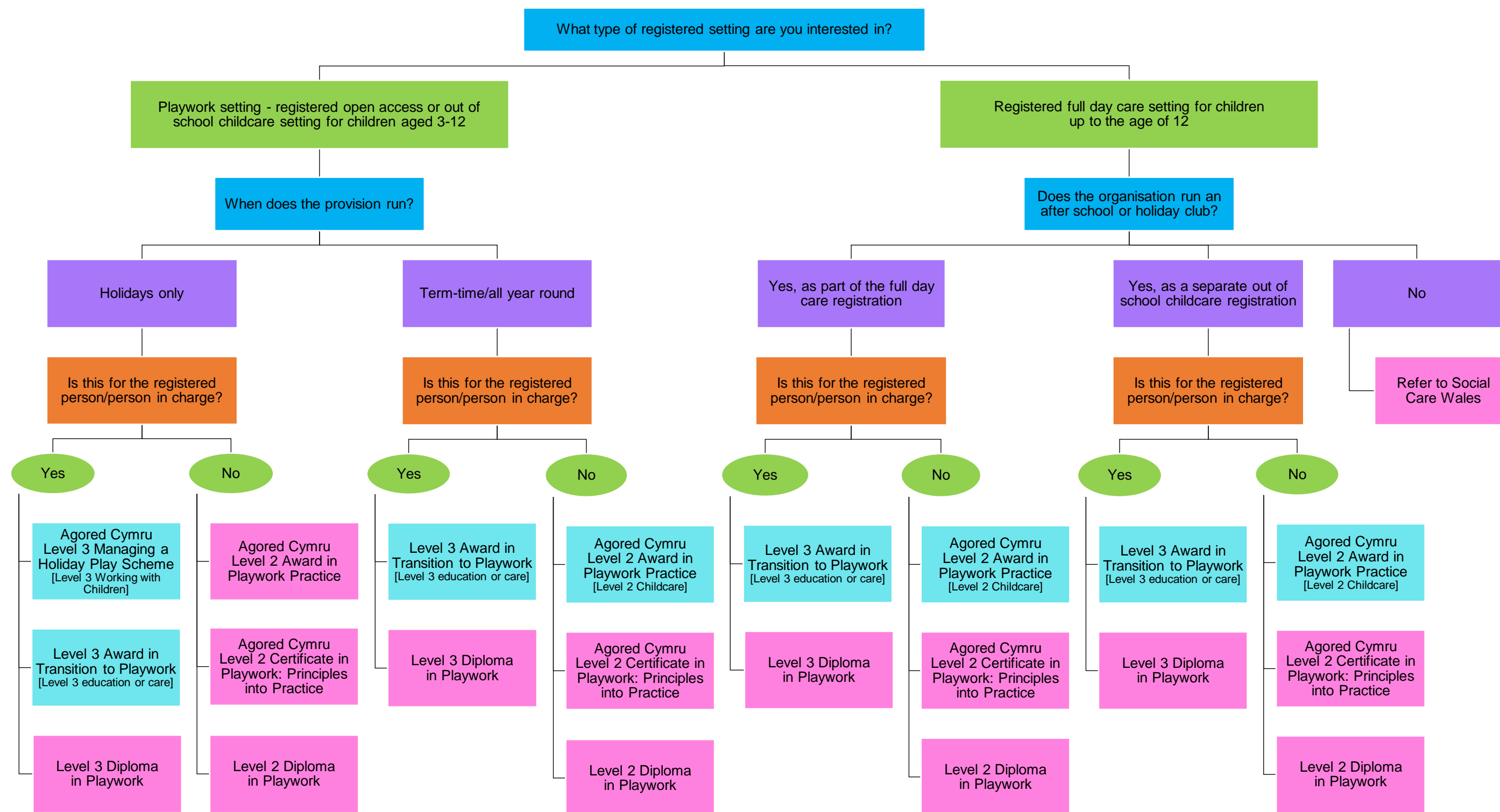


# Playwork Qualifications Flowchart



Level 2 playwork qualifications apply for at least 50% of non-supervisory staff (National Minimum Standards 2016)

## Notes

- 1) These are the qualification requirements for existing and newly registered settings in respect of playwork
- 2) For the core qualification requirements for registered childminders, full day care, sessional daycare and creche facilities please refer to Social Care Wales <https://socialcare.wales/qualification-framework>
- 3) There is a lead-in time for settings to gain playwork qualifications of 30 September 2022
- 4) Qualifications in this flowchart are the **recommended** qualifications as referred to in the National Minimum Standards. If staff have other relevant qualifications, knowledge and experience then talk to Care Inspectorate Wales about the options
- 5) For more details on specific qualifications refer to the PETC Wales *List of Required Qualifications to work within the Playwork Sector in Wales* <https://www.playwales.org.uk/eng/requiredqualifications>

**Key** These are standalone qualifications suitable for the role described | These are Awards that need to be held alongside other qualifications [shown in brackets]

In line with paragraph 5 of Circular Letter WGC 006/2017 the requirement for playwork qualifications does not apply to Childminders